



OUR VISION

The image displays a wide variety of aluminum extrusion products. In the background, several solid vertical bars are shown in different colors: grey, dark wood-grain, light wood-grain, yellow, orange, tan, blue, and silver. In the foreground, numerous cross-sections of these extrusions are laid out, revealing their complex internal profiles, which include channels, flanges, and reinforced structures. The entire arrangement is set against a plain white background, highlighting the diverse capabilities of the manufacturing process.

“To be the Premier Aluminum Extrusion Manufacturer in the South Asian Region.”

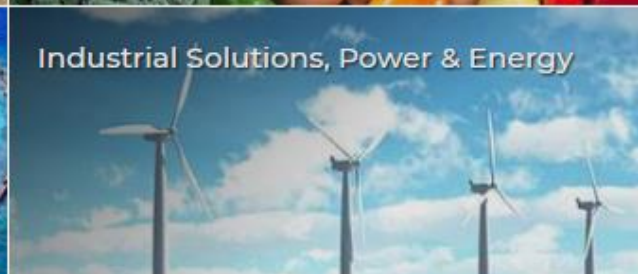
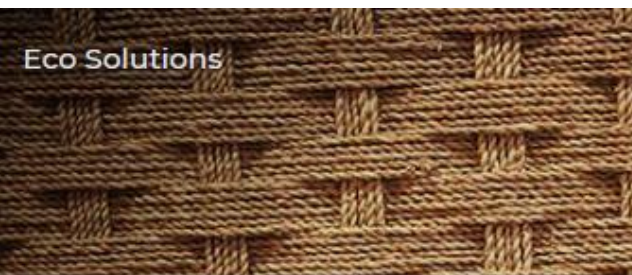
About Alumex

- Alumex PLC is the leading manufacturer of Aluminum Profiles in Sri Lanka.
- Only Company have Global Representation
- Incorporated in 1986 and commenced its production activities in 1988.
- Alumex PLC is equipped with modern Extrusion, Anodizing, Powder Coating, Wood Effect & Chemical Brightening facilities.
- Also produce logs and equipped with CNC machinery for die making.
- Alumex PLC is Qualicoat, Qualicoat (Sea Side), Qualanod, ISO 9001:2015 & SLS certified Aluminium profiles manufacturer in Sri Lanka.
- Alumex PLC is a Member of Hayleys Group



Hayleys Plc. The Most Diversified and the Largest Business Conglomerate in Sri Lanka.

With a 140 year heritage and business interests that span across 16 sectors and a global footprint reaching across to business strongholds in 5 continents and 17 countries across the globe, we are a force to be reckoned with in business. Visit www.hayleys.com



Alumex Journey



Alumex private Limited initiated as a South Korean Sri Lankan joint venture



First powder coating plant was installed



Modern Anodizing plant was installed



Hayleys PLC acquires controlling ownership of ALUMEX



Horizontal Fully Automated powder coating plant was installed

1986

1988

1999

2000

2008

2010

2015

2018

Commercial production began with the 6" inch extruder and the Anodizing plant



7" inch largest extruder in SL was installed.



6" inch Modern Extruder plant was installed



The first south Asian Vertical Fully Automated Powder coating plant & Fully Automated Extrusion Plant installed at Ekala factory



About Alumex

Over 650 Employees

Three Extrusion Machines

(Total Capacity 2000MT/Month)
Max. CCD 260MM

1. 6"(Chinese – 15MN) – in 2010

2. 7"(South Korean - 18MN) – in 2000

3. 7"/ 8" Ekala (Presezzi, Italy – 23MN) – in 2018

Three Powder Coating Plants

(Capacity: 1425MT/Month)

1. Italtecnio Plant (2015) - 425MT/ Month (Italy)

2. SAT Travisan Cube (2018) - 1000MT/ Month (Italy)

Anodizing Plant & Chemical Brightening Capacity - 400MT/Month (Monty Engineering; Italy)

Wood Finish Plant

Capacity - 60MT/ Month



www.alumexgroup.com



SAVING TREES FOR OVER A GENERATION



30
ECO-FRIENDLY
YEARS





Our Promise - Guaranteed Quality

- We offer minimum of 10 year warranties to our products which can extend up to 30 years with specialized surface coatings
- We offer Manufacturer's Quality Certificate to ensure that the products complying to international Specifications & Standards
- We use premium quality raw materials
- We conduct all the product testing required in-house
- We provide technical assistance to our customers

Quality Standards

1. ISO 9001:2015
2. SLS – I4I0
3. SLS – I4I1
4. Qualicoat, Qualicoat (Sea Side) and Qualanod
5. Approved Applicator of Jotun, Akzo Nobel & DGL (Dulux - Australia), for all general powders and for super durable powders up to 30 year warranties)



Technical Standards for Alumex Extrusions

Description	Test method	Standard
Chemical Composition	BSEN 515,BSEN 573,BSEN 755,BSEN 12020-2,SLS 1410	Primary Aluminum alloy BSEN 6063,6060 or an equivalent Silicon (0.35 – 0.45)% Magnesium (0.45 – 0.55)%, Iron 0.2% max, etc... or Alloy 6061, 6082.
Tensile Strength & Temper	ISO 6892:2009	Minimum 175 N/mm ² T1, T4, T5, T6, T66
Wall Thickness	BS EN 12020-2	CCD≤100 range ±0.15 CCD≥100 range ±0.20
Length	BS EN 12020-2	2m ≤ L ≤ 5m Length Tolerance is (+7mm to -0) & 5m < L ≤ 7m Length Tolerance is (+10mm to 0)

Technical Standards for Alumex Anodized Extrusions

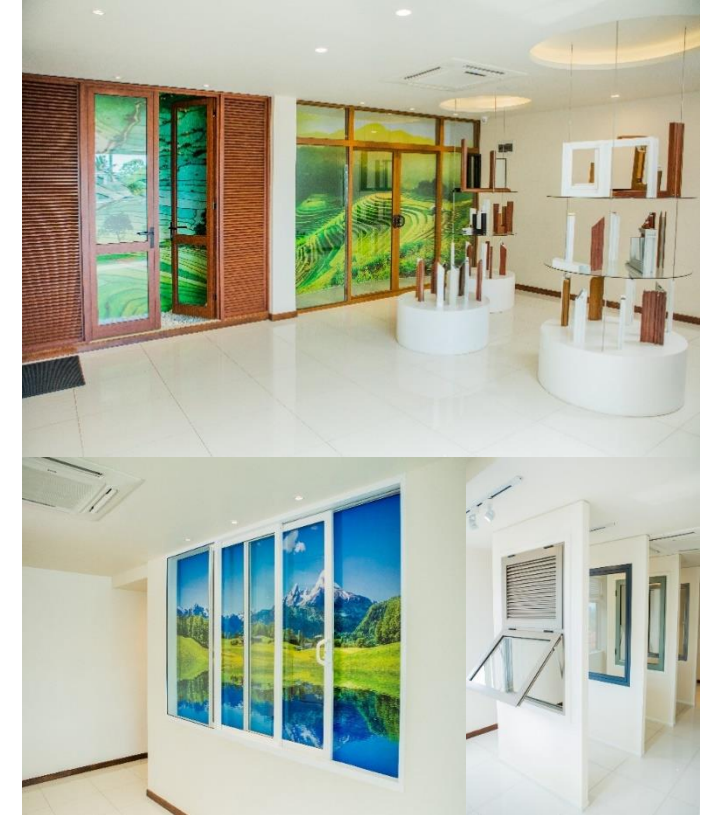
Description	Test method	Standard
Film Thickness	EN ISO 2360	(10–15)μ, (15–20)μ (20–25)μ
Weight loss	BSEN ISO 3210	Maximum loss of weight 30mg/dm ²
Dye Spot	BS EN 12373–4	Rating is ≤ 2

Technical Standards for Alumex Powder Coated Extrusions

Description	Test method	Standard
Dry Film Thickness	EN ISO 2360	According to powder supplier's Spec.
Gloss, initial,(angle 60°)	ISO 2813	30 ± 5 , 70 ± 7, 100 ± 10
Crosshatch(2mm + tape)	EN ISO 2409	Cross cut rating GT0 Non of square of the lattice is detached
Impact	EN ISO 6272	No detachment after tape pull adhesion test
Bend	EN ISO 1519	No detachment after tape pull adhesion test
Cupping	EN ISO 1520	With stand Minimum 5mm with out any detachment from the substrate
Indentation	EN ISO 2815	Indentation resistance should be minimum 80 ($\alpha B > 80$)
Salt spray test	EN ISO 9227	No corrosion creep from the scratch (one side), after test, No blistering after test

Sri Lanka's only Aluminium Profile Manufacturer with UKAS Testing Accreditation

- C groove Casement
- ESD Sliding System
- Sliding & Fix Systems
- Curtain Walls up to 220mm with Thermal Breaks
- Double Glazed Sliding Systems
- Doors
- Unitized & Semi Unitized Aluminium Systems



The Biggest South Asian Fully Automated Vertical Powder Coating Plant & 7" & 8" Combined Extruder at Alumex Prime Production Facility at Ekala



Sri Lanka's only Approved Applicator for DGL, JOTUN & AKZO-NOBEL



Comprehensive warranties up to 30 years for Surface Coatings



GLOBAL BRANDS AND PARTNERSHIPS

Alumex is an ISO 9001:2015 certified Company with both QUALICOAT and QUALANOD certification for its high quality products.

USA



DUPONT CORIAN

A manufacture of advanced composite product used as a decorative material.

NORWAY



HYDRO ALUMINIUM

Hydro Aluminium-Norway is a Norwegian Aluminium and renewable energy company, head-quartered in Oslo.

ITALY



AluK

A leader in the design and manufacture of a range of sophisticated Aluminium building systems.

GERMANY



ORG ADATA AG

A leading technology-driven company which develops analytical software systems.

INDIA



AKZO NOBEL INDIA LTD

The largest global manufacturer of powder coatings and a world leader in powder coatings technology.

TURKEY



NISAN MAKINA

Nisan Makina makes punching machineries used in Aluminium fabrication.

NORWAY

GERMANY

ITALY

TURKEY

UAE

INDIA

SINGAPORE

NEW ZEALAND

NEW ZEALAND



Altus (FLETCHER) ALUMINIUM

One of the largest conglomerates in New Zealand which supplies Aluminium proprietary systems.



DGL INTERNATIONAL

A leading manufacturer of powder and thermal polymer alloy coatings.

JAPAN



MITSUBISHI PLASTICS INC.

Manufacturer and supplier of Aluminium composite panels.

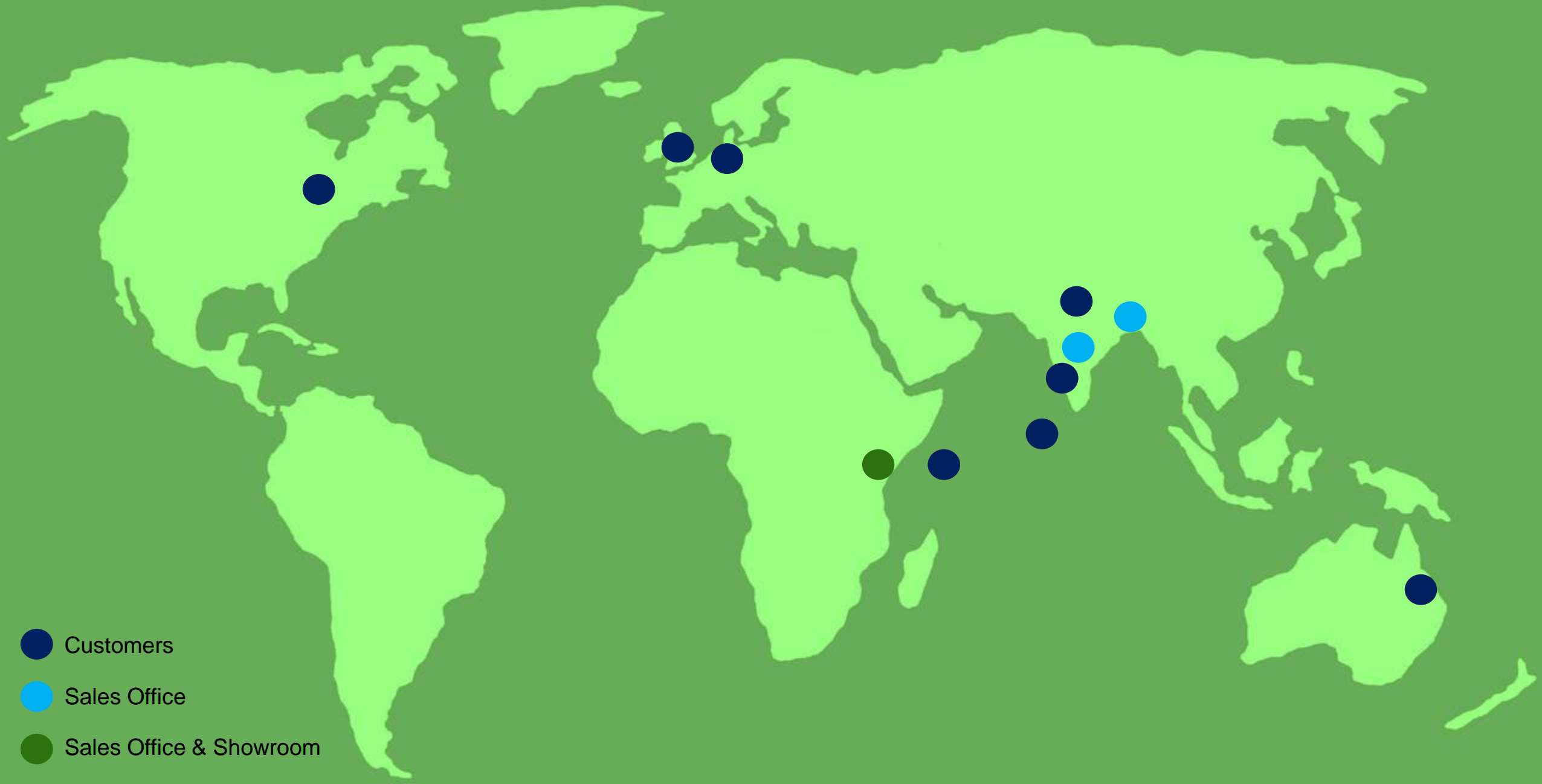
SINGAPORE



PRIME STRUCTURE

Prime Structures is a Singapore-based company providing complete building envelope solutions.

Our International Presence



Few Recent Projects with Alumex





Visit us

www.alumexgroup.com | www.lumin.lk